

THE SHADOW LOUNGE
LONDON SOHO



5 Brewer Street, Soho | London | W1F 0RF
T: 020 7287 7988 | F: 020 7287 8389
E: sales@theshadowlounge.co.uk | W: www.theshadowlounge.co.uk

EVENTS & FUNCTIONS

In the fashionable Brewer Street, The Shadow Lounge is perfectly located in the heart of London's Soho district.

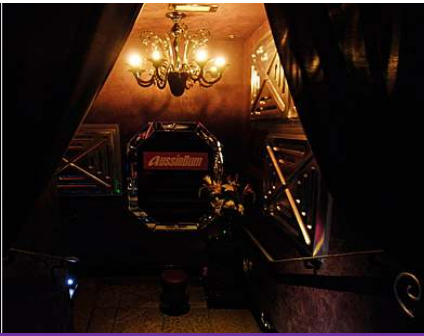
Europe's premier gay members club boasts a reputation for attracting both celebrities and a high profile customer base. Also popular with private and corporate event bookings for those who realise the importance of being associated with an internationally recognised brand.



280 people capacity with sunken dance floor, large bar area, seven different sized booths and the latest sound and light system, The Shadow Lounge is ideal for:

- Product launches
- Wrap parties
- Christmas Parties
- Drinks receptions
- Civil Partnership & Wedding receptions
- Fashion shows
- Filming & Photo shoots
- Music Industry Showcases
- Speed Dating & Networking events
- Late Night Entertainment

Create your event around the playful and stylish design of each area or use the space as a blank canvas to brand and design to your requirements. With a 3am license and fantastic lighting and AV equipment, the venue is as versatile as you need it to be.



FACILITIES & SERVICES INCLUDE:

- Wi-Fi throughout the venue
- PA System, microphones and DJ equipment
- Stage for presentations & performances
- Cloakroom and security
- Additional AV available upon request

DRINKS IDEAS

- Champagne Receptions
- All inclusive packages
- Drinks Vouchers
- Pre-ordered drinks
- Open Bar
- Your own cocktail

FOOD MENUS

- Canapés
- Finger Food
- Fork Buffets

MEMBERSHIP

As a Shadow Lounge Member you can enjoy some great privileges including:

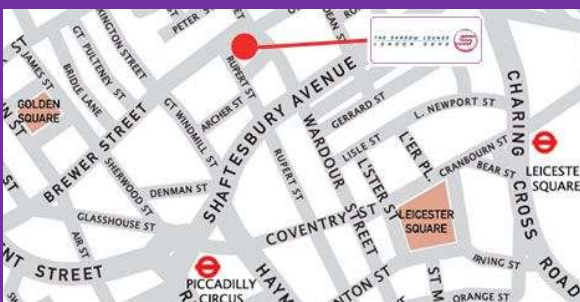
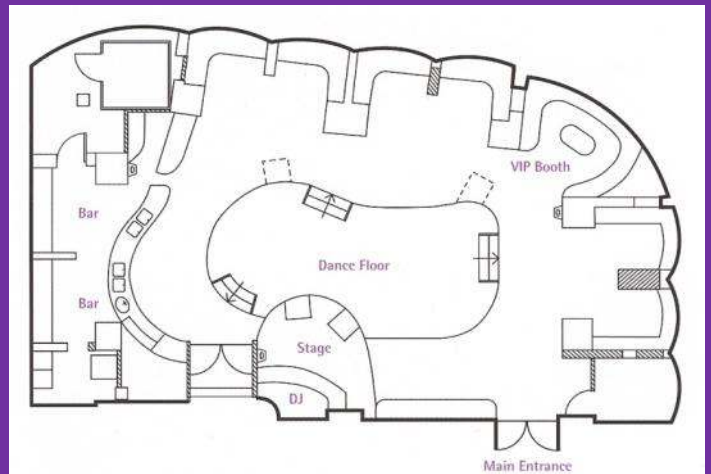
- Complimentary entry for yourself and your guests (plus 4 Mon-Thurs & plus 1 on Fri-Sat)
- Fast track guest list
- Advance booth and table reservations
- Complimentary cloakroom
- Personal table waiter
- Discounts at selected premium businesses (Advantage club)
- Bottle of Champagne for every new member
- Invites to the famous Shadow Lounge Member parties

For more information on how to become a member please e-mail membership@theshadowlounge.co.uk

VITAL INFORMATION

At The Shadow Lounge, all areas are available for corporate and private hire from 9am to 3am. We work on a minimum spend basis or dry hire for those functions with no catering requirements. All our prices and deposits are flexible and negotiable.

For all enquiries please contact our Sales & Events Manager, Filipe Borne, on 020 7287 7988/ mob 078 4541 3957 or email filipe.borne@novusleisure.com.



5 Brewer Street
Soho
London W1F 0RF
www.theshadowlounge.co.uk

